

# Evaluating complex interventions: Logic analysis of a case management program for frequent users of healthcare services



Mathieu Bisson<sup>1</sup>, Maud-Christine Chouinard<sup>2</sup>, Astrid Brousselle<sup>3</sup>, Alya Danish<sup>1</sup>, Catherine Hudon<sup>1,4</sup>

<sup>1</sup>Département de médecine de famille et de médecine d'urgence, Université de Sherbrooke, QC, Canada; <sup>2</sup>Département des sciences de la santé, Université du Québec à Chicoutimi, QC, Canada; <sup>3</sup>School of public administration, University of Victoria, BC, Canada; <sup>4</sup> Centre de recherche du Centre hospitalier universitaire de Sherbrooke, QC, Canada.

## BACKGROUND

- Case management (CM) programs for frequent users of healthcare services may improve patient care and reduce cost.<sup>1</sup>
- These complex interventions present practical and methodological challenges to implementation and evaluation.<sup>2</sup>

## OBJECTIVE

- To analyze and inform the improvement of a CM program for frequent users of healthcare services by using logic analysis.

## METHODS

- Logic analysis in three steps<sup>2</sup>
- Data collection (n=129) : semi-structured interviews (n=58), focus groups (n=13), participant observations (n=39), document analysis, and meetings with team members.

## DISCUSSION

- Stakeholder participation in reflective activities may have resulted in greater validity of the results and a common understanding of the CM program
- Logic analysis sheds lights on the complementary roles of logic modelling and realistic synthesis

## CONCLUSION

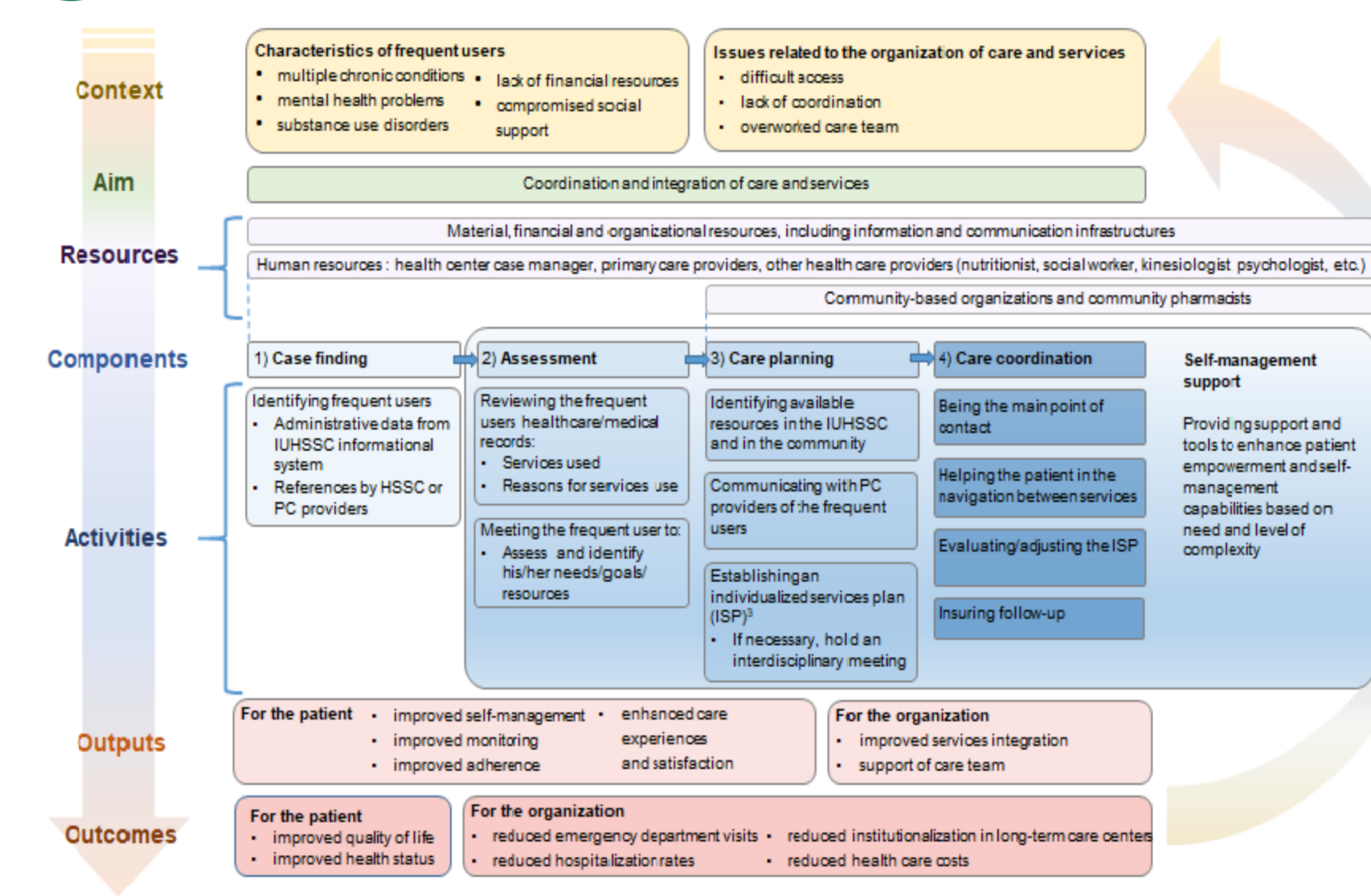
- The logic analysis helped to identify key intangible and structural factors for the intervention to be effective.

## REFERENCES

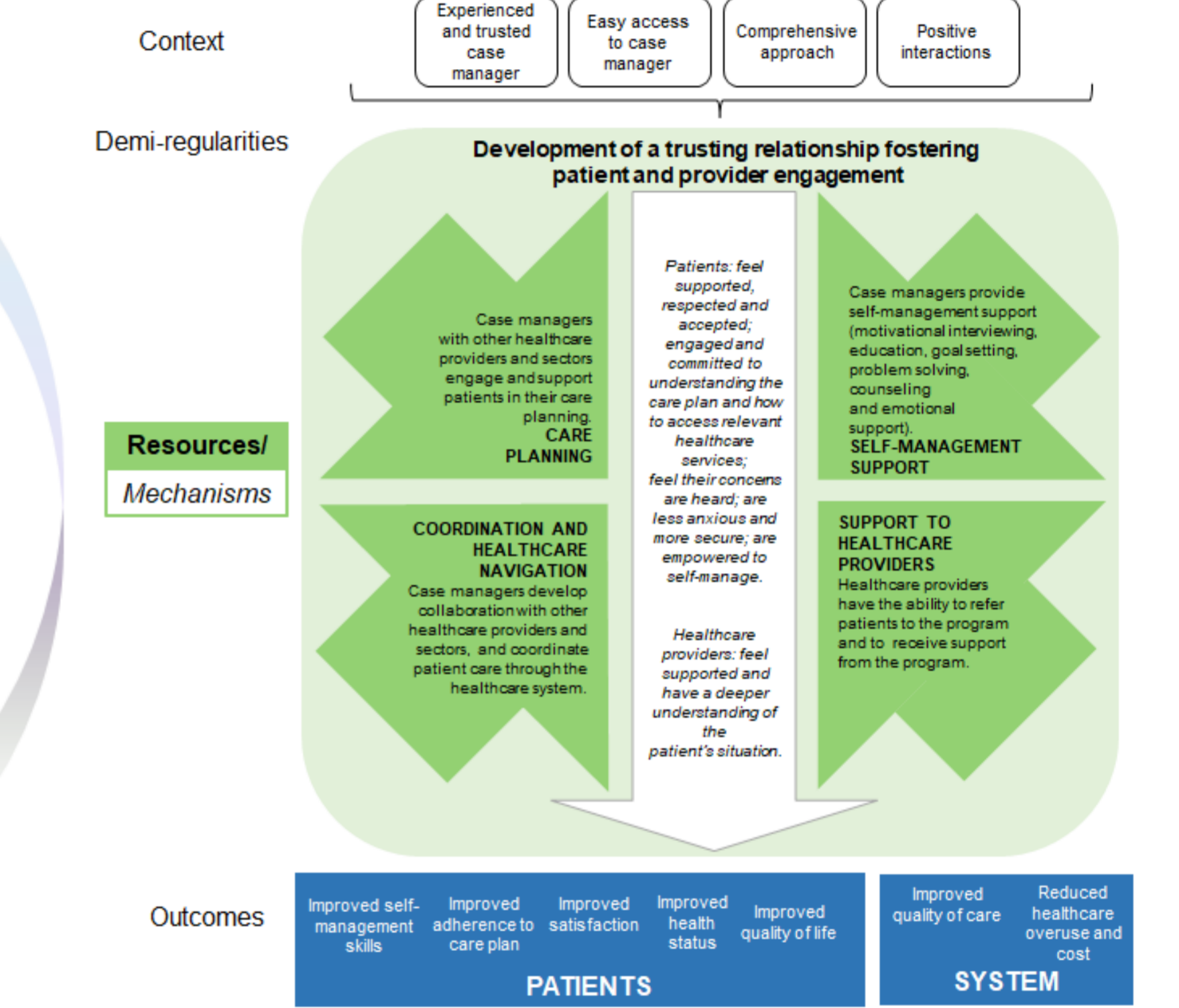
1. Althaus F, Paroz S, Hugli O, Ghali WA, Daepfen JB, Peytremann-Bridevaux I, et al. Effectiveness of interventions targeting frequent users of emergency departments: a systematic review. *Ann Emerg Med.* 2011;58(1):41-52 e42
2. Brousselle A & Buregeya J-M. Theory-based evaluations: Framing the existence of a new theory in evaluation and the rise of the 5th generation. *Evaluation* (2018), 24 (2), 153-168.
3. Hudon C, Chouinard MC, Aubrey-Bassler K, Muhajarine N, Burge F, Bush P L, et al. Pluyc P. Case management in primary care among frequent users of health care services with chronic conditions: a realist synthesis. *Annals of family medicine* (accepted).

## RESULTS

**1** Development of a **logic model** of the CM program describing the relationships between resources, activities and outcomes



**2** Use of a realist synthesis as an **integrative framework**<sup>3</sup>



**3** Comparison of the logic model against the integrative framework to highlight **strengths and limitations** of the CM program

Strengths (determinants for the production of the expected results)	Limitations (factors that should be added, clarified or explained)
<ul style="list-style-type: none"> <li>• Identifying users' characteristics and program's issues</li> <li>• Identification of allocated resources</li> <li>• Description of CM program activities</li> </ul>	<ul style="list-style-type: none"> <li>• Should pay attention to specific situation of patients with a substance use disorder</li> <li>• Promote positive interaction between patients and health providers</li> <li>• Access to an experienced and trustworthy case manager</li> <li>• Importance of a comprehensive approach</li> <li>• Patient and provider support</li> <li>• Outcomes for providers</li> </ul>
<p>Strengths: Structural factors Limitations: Intangible factors</p>	

## ACKNOWLEDGMENTS

- Participating decision-makers: Myriam-Nicole Bilodeau, Sylvie Massé, Jean Morneau, Mélanie Paradis, Caroline Savard and Marc Villeneuve
- Patient partner: Véronique Sabourin
- Collaborator: Danielle Bouliane



For information : Catherine.Hudon@USherbrooke.ca  
Maud-Christine\_Chouinard@Uqac.ca